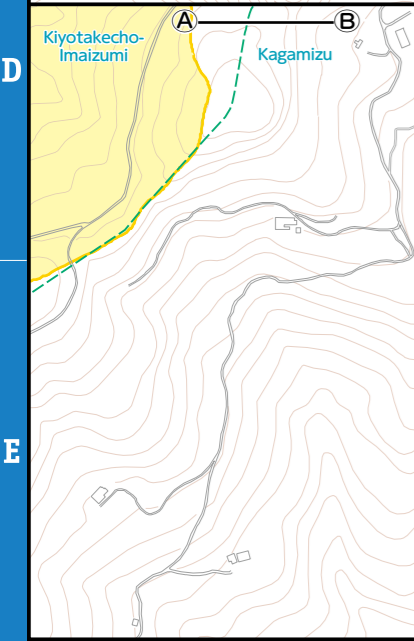
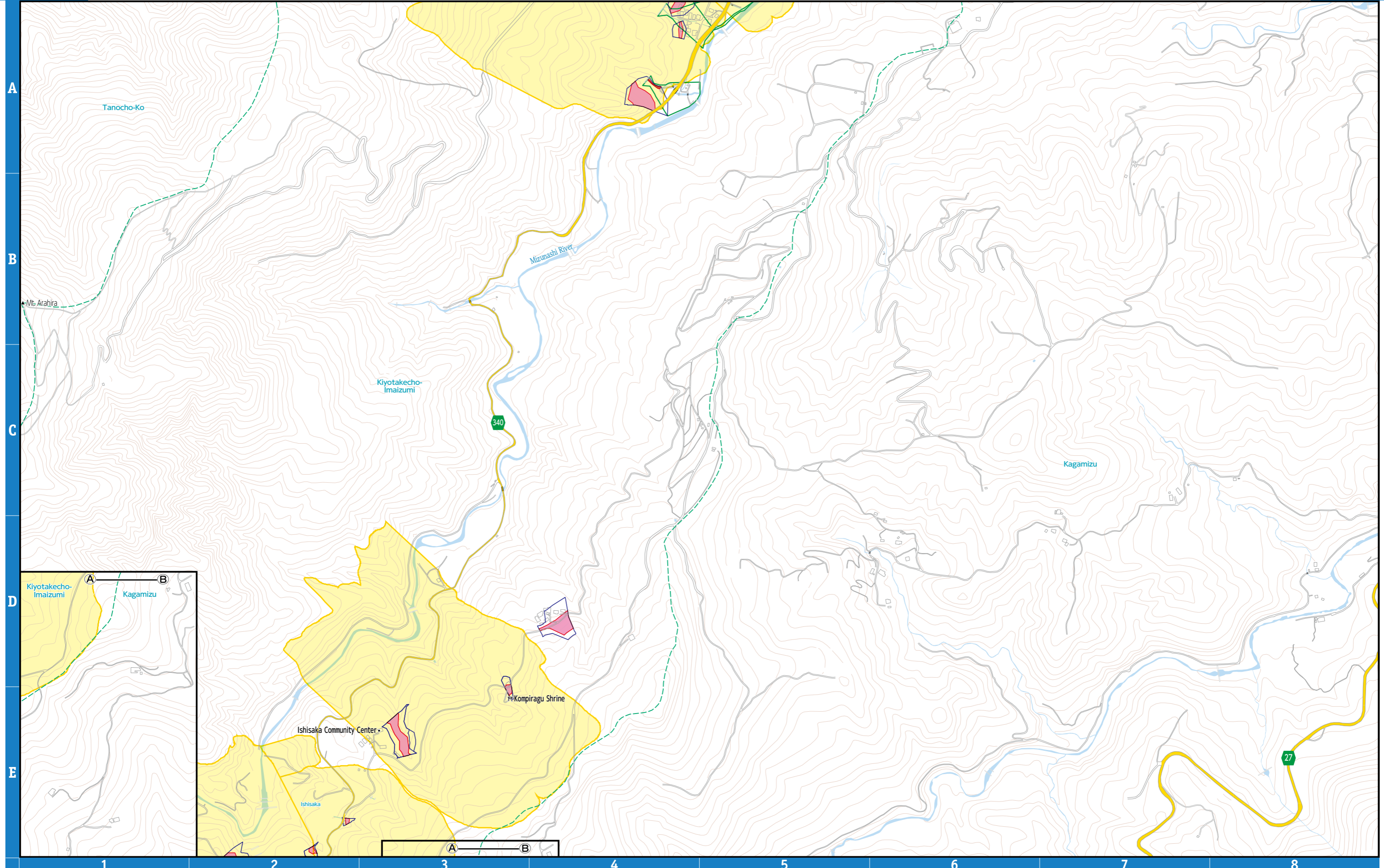
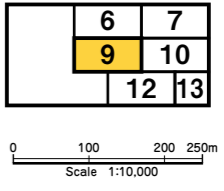


	Designated Shelter (Outside the flood inundation area)
	Designated Shelter (Within the flood inundation area)
	Main Facilities
	Emergency Designated Hospital
	Life Line

	More than 20.0m
	10.0 to less than 20.0m
	5.0 to less than 10.0m
	3.0 to less than 5.0m
	1.0 to less than 3.0m
	0.5 to less than 1.0m
	0.3 to less than 0.5m
	0.3m or less

	Inundation Area such as collapsed houses (Flood Flow / Riverbank Erosion)
	Designated water level observatory
	Past Inundation Area (Typhoon, Heavy Rain, etc.)
	Underpass
	Disaster Risk Area

	Debris Flow Hazard Area
	Special Debris Flow Hazard Area
	Steep slope Hazard Area
	Special Steep slope Hazard Area
	Landslide Hazard Area





	Designated Shelter (Outside the flood inundation area)
	Designated Shelter (Within the flood inundation area)
	Main Facilities
	Emergency Designated Hospital
	Life Line

	More than 20.0m
	10.0 to less than 20.0m
	5.0 to less than 10.0m
	3.0 to less than 5.0m
	1.0 to less than 3.0m
	0.5 to less than 1.0m
	0.3 to less than 0.5m
	0.3m or less

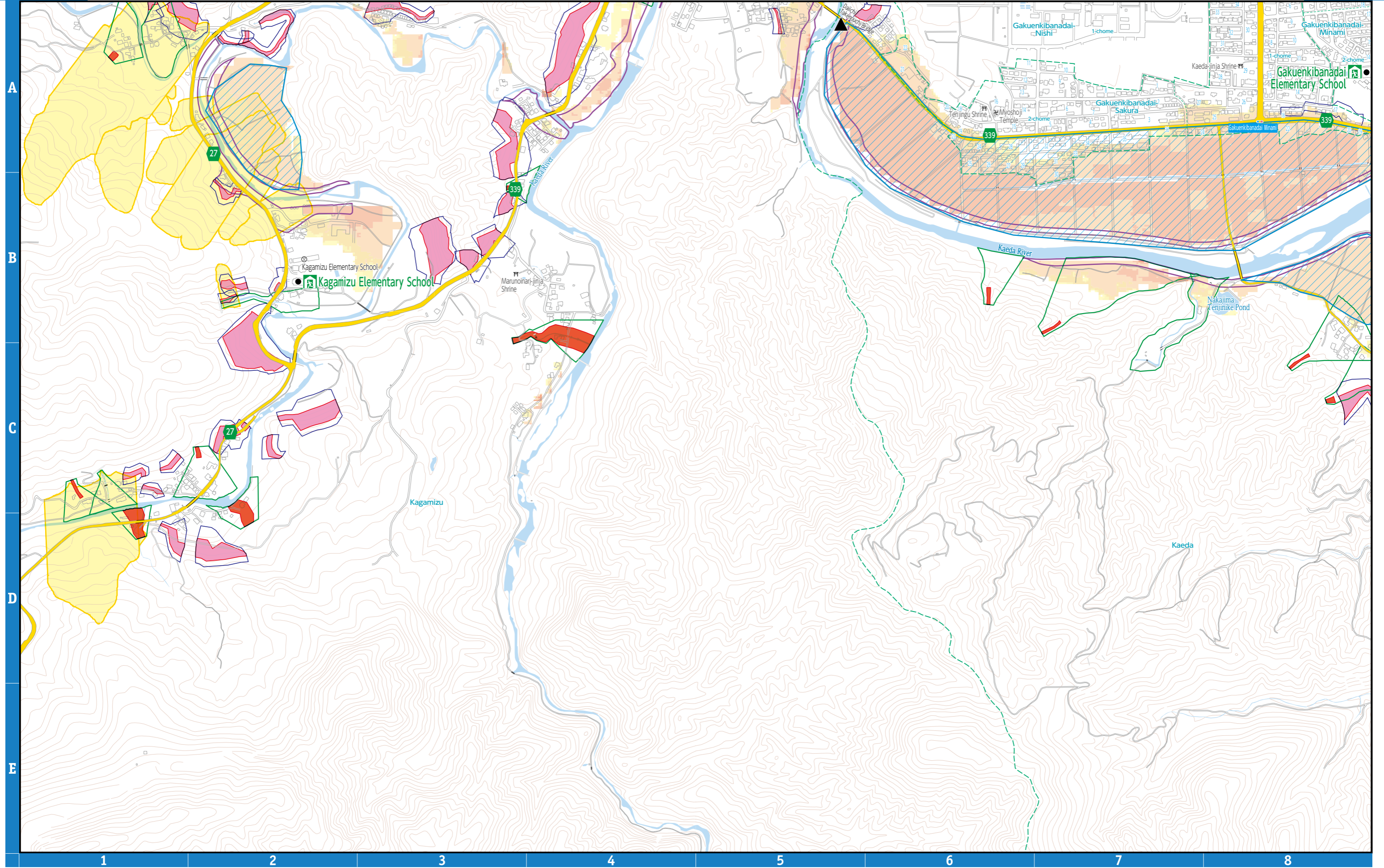
	Inundation Area such as collapsed houses (Flood Flow / Riverbank Erosion)
	Designated water level observatory
	Past Inundation Area (Typhoon, Heavy Rain, etc.)
	Underpass
	Disaster Risk Area

	Debris Flow Hazard Area
	Special Debris Flow Hazard Area
	Collapse of Steep slope Hazard Area
	Special Steep slope Hazard Area
	Landslide Hazard Area



6	7	8
9	10	11
12	13	14

0 100 200 250m  
Scale 1:10,000



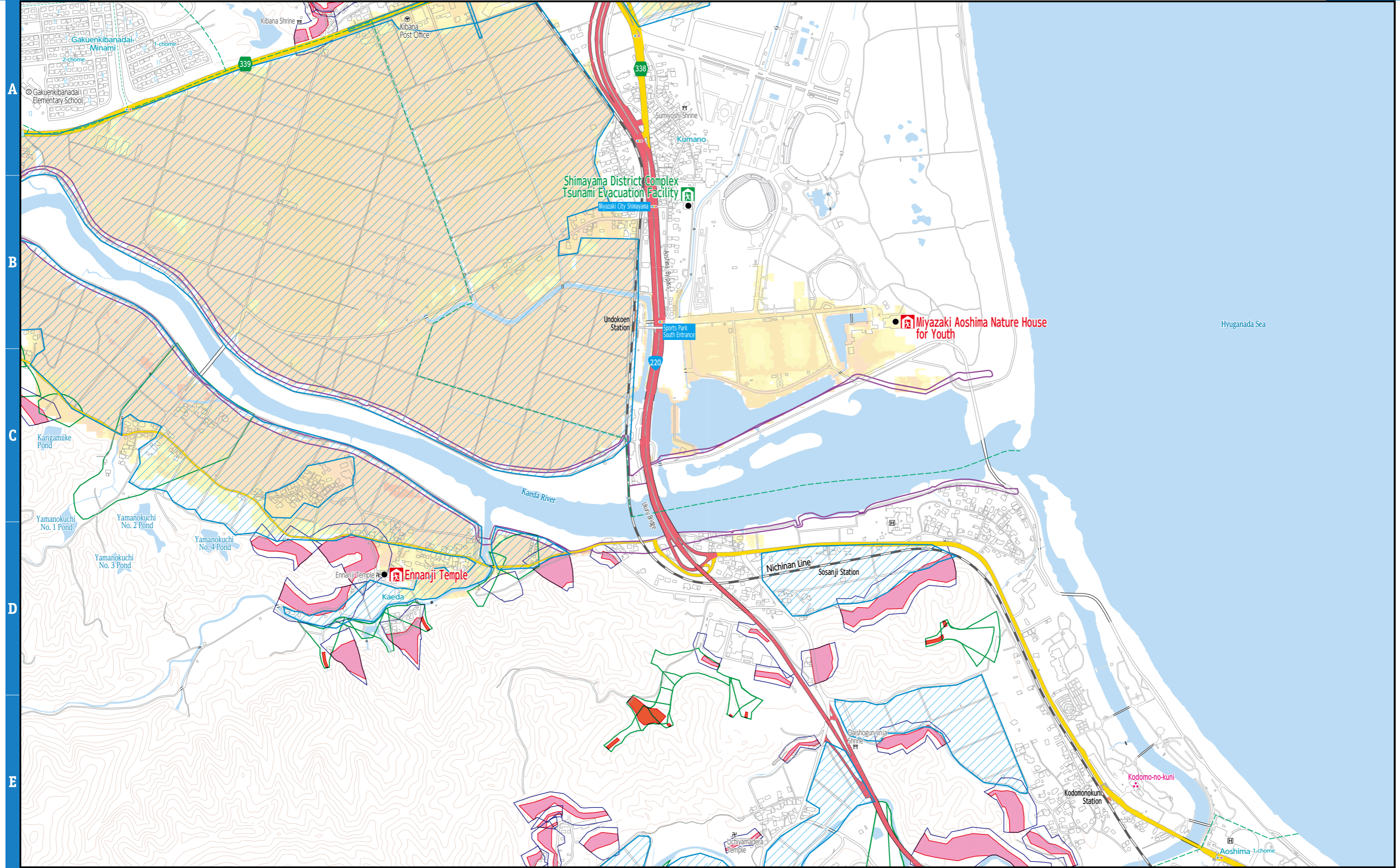
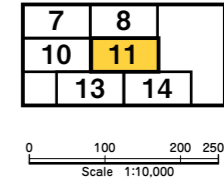


	Designated Shelter (Outside the flood inundation area)
	Designated Shelter (Within the flood inundation area)
	Main Facilities
	Emergency Designated Hospital
	Life Line

	More than 20.0m
	10.0 to less than 20.0m
	5.0 to less than 10.0m
	3.0 to less than 5.0m
	1.0 to less than 3.0m
	0.5 to less than 1.0m
	0.3 to less than 0.5m
	0.3m or less

	Inundation Area such as collapsed houses (Flood Flow / Riverbank Erosion)
	Designated water level observatory
	Past Inundation Area (Typhoon, Heavy Rain, etc.)
	Underpass
	Disaster Risk Area

	Debris Flow Hazard Area
	Special Debris Flow Hazard Area
	Steep slope Hazard Area
	Special Steep slope Hazard Area
	Landslide Hazard Area



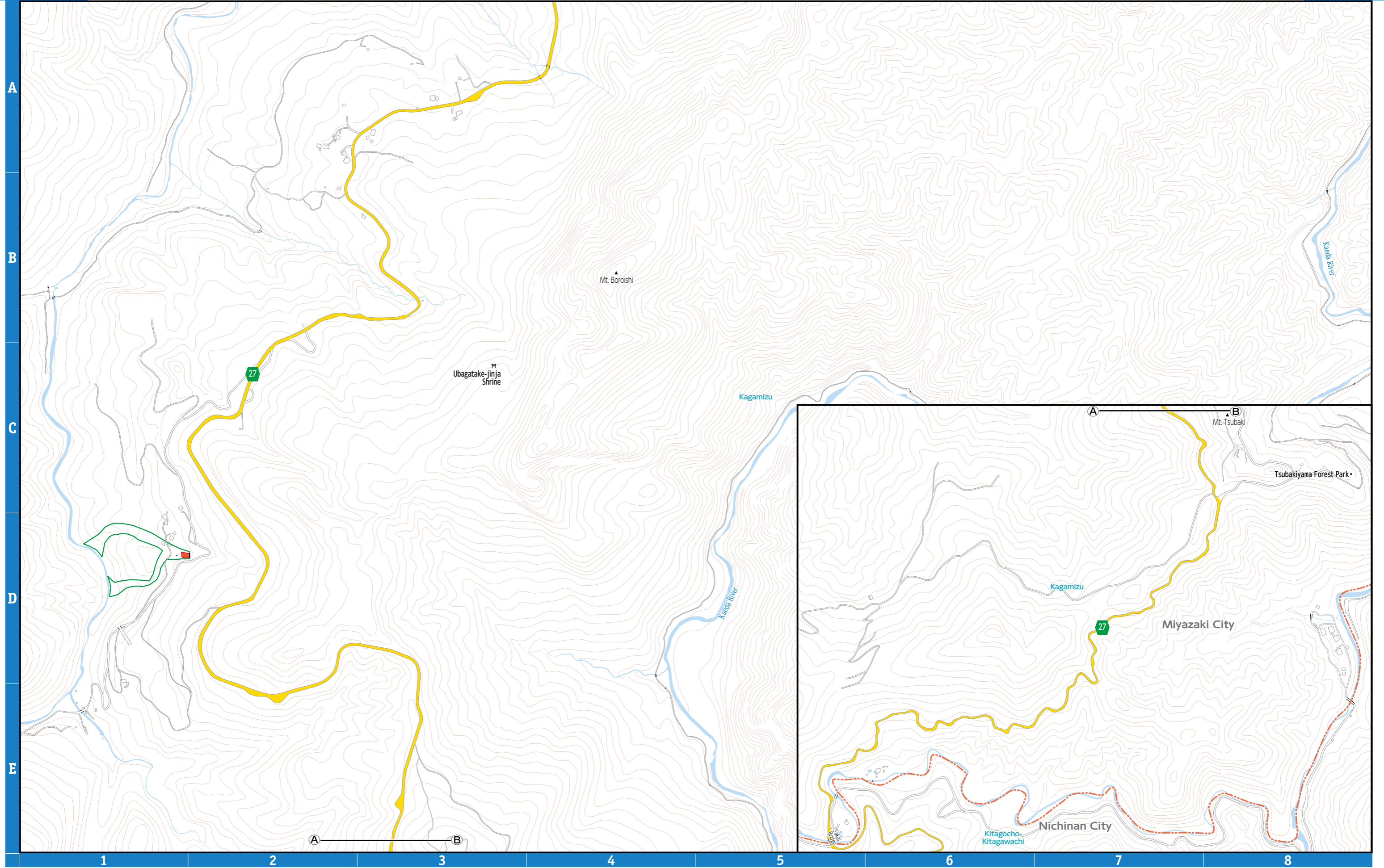
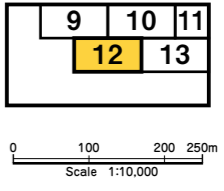


	Designated Shelter (Outside the flood inundation area)
	Designated Shelter (Within the flood inundation area)
	Main Facilities
	Emergency Designated Hospital
	Life Line

	More than 20.0m
	10.0 to less than 20.0m
	5.0 to less than 10.0m
	3.0 to less than 5.0m
	1.0 to less than 3.0m
	0.5 to less than 1.0m
	0.3 to less than 0.5m
	0.3m or less

	Inundation Area such as collapsed houses (Flood Flow / Riverbank Erosion)
	Designated water level observatory
	Past Inundation Area (Typhoon, Heavy Rain, etc.)
	Underpass
	Disaster Risk Area

	Debris Flow Hazard Area
	Special Debris Flow Hazard Area
	Steep slope Hazard Area
	Special Steep slope Hazard Area
	Landslide Hazard Area





	Designated Shelter (Outside the flood inundation area)
	Designated Shelter (Within the flood inundation area)
	Main Facilities
	Emergency Designated Hospital
	Life Line

	More than 20.0m
	10.0 to less than 20.0m
	5.0 to less than 10.0m
	3.0 to less than 5.0m
	1.0 to less than 3.0m
	0.5 to less than 1.0m
	0.3 to less than 0.5m
	0.3m or less

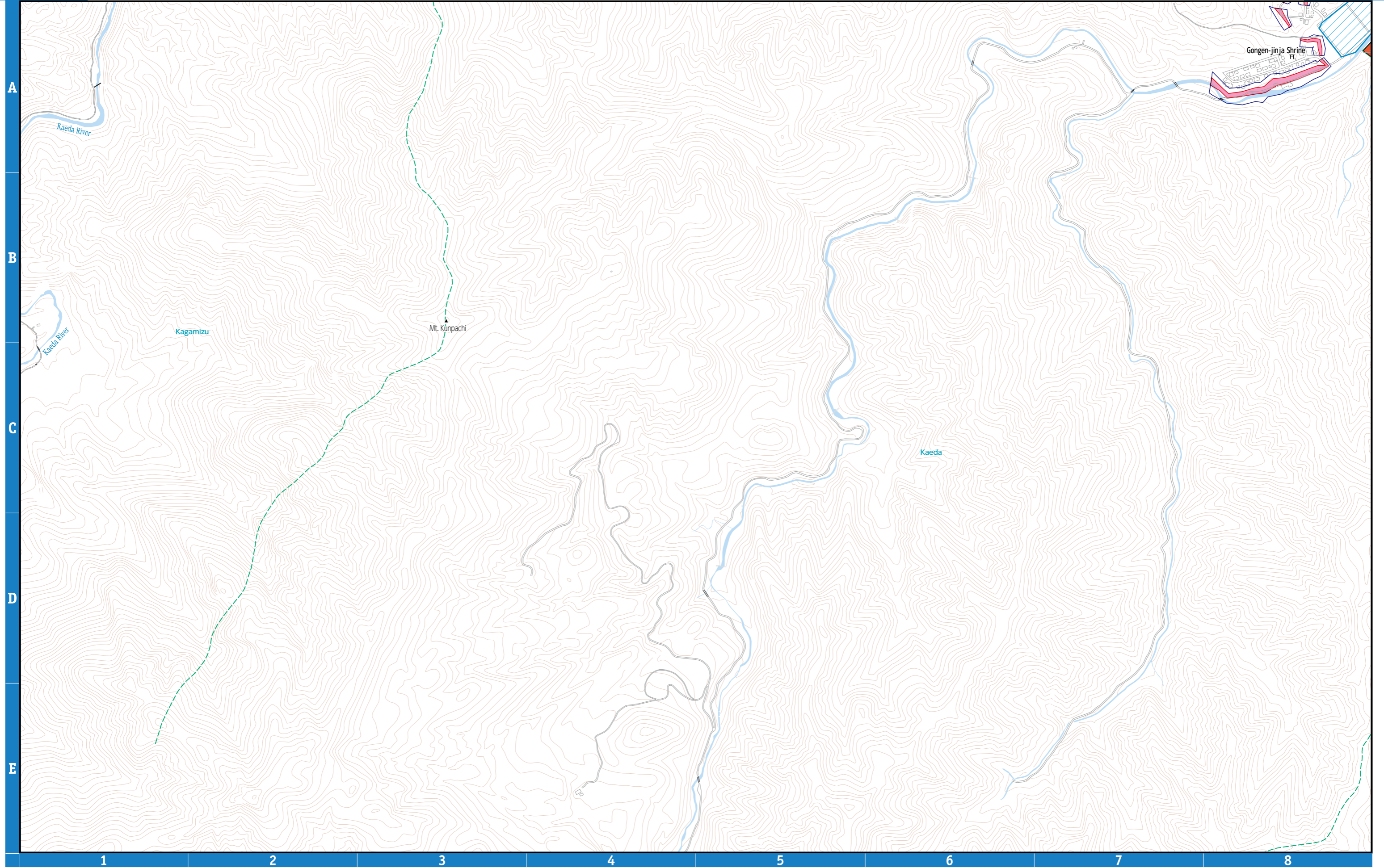
	Inundation Area such as collapsed houses (Flood Flow / Riverbank Erosion)
	Designated water level observatory
	Past Inundation Area (Typhoon, Heavy Rain, etc.)
	Underpass
	Disaster Risk Area

	Debris Flow	Collapse of Steep slope	Landslide		
	Debris Flow Hazard Area		Steep slope Hazard Area		Landslide Hazard Area
	Special Debris Flow Hazard Area		Special Steep slope Hazard Area		



9	10	11
12	13	14
		15

0 100 200 250m  
Scale 1:10,000





	Designated Shelter (Outside the flood inundation area)
	Designated Shelter (Within the flood inundation area)
	Main Facilities
	Emergency Designated Hospital
	Life Line

	More than 20.0m
	10.0 to less than 20.0m
	5.0 to less than 10.0m
	3.0 to less than 5.0m
	1.0 to less than 3.0m
	0.5 to less than 1.0m
	0.3 to less than 0.5m
	0.3m or less

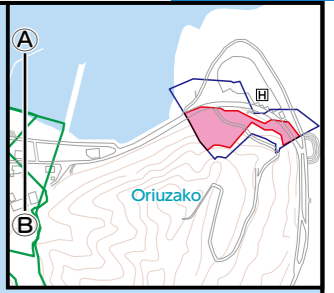
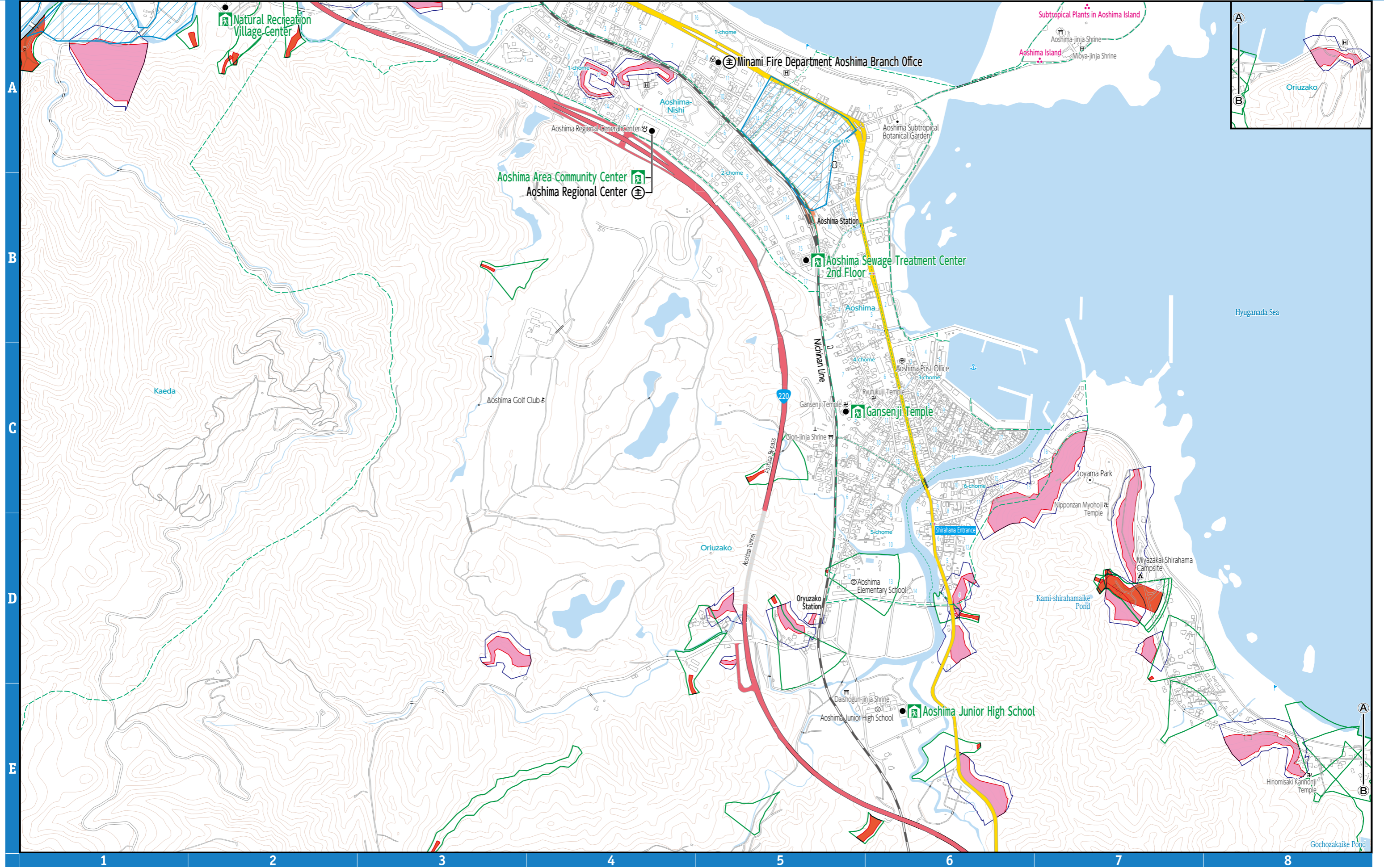
	Inundation Area such as collapsed houses (Flood Flow / Riverbank Erosion)
	Designated water level observatory
	Past Inundation Area (Typhoon, Heavy Rain, etc.)
	Underpass
	Disaster Risk Area

	Debris Flow Hazard Area
	Special Debris Flow Hazard Area
	Steep slope Hazard Area
	Special Steep slope Hazard Area
	Landslide Hazard Area



10	11
13	14
	15

0 100 200 250m  
Scale 1:10,000



A  
B  
C  
D  
E

1 2 3 4 5 6 7 8



	Designated Shelter (Outside the flood inundation area)
	Designated Shelter (Within the flood inundation area)
	Main Facilities
	Emergency Designated Hospital
	Life Line

River flood inundation depth		More than 20.0m
		10.0 to less than 20.0m
		5.0 to less than 10.0m
		3.0 to less than 5.0m
		1.0 to less than 3.0m
		0.5 to less than 1.0m
		0.3 to less than 0.5m
		0.3m or less

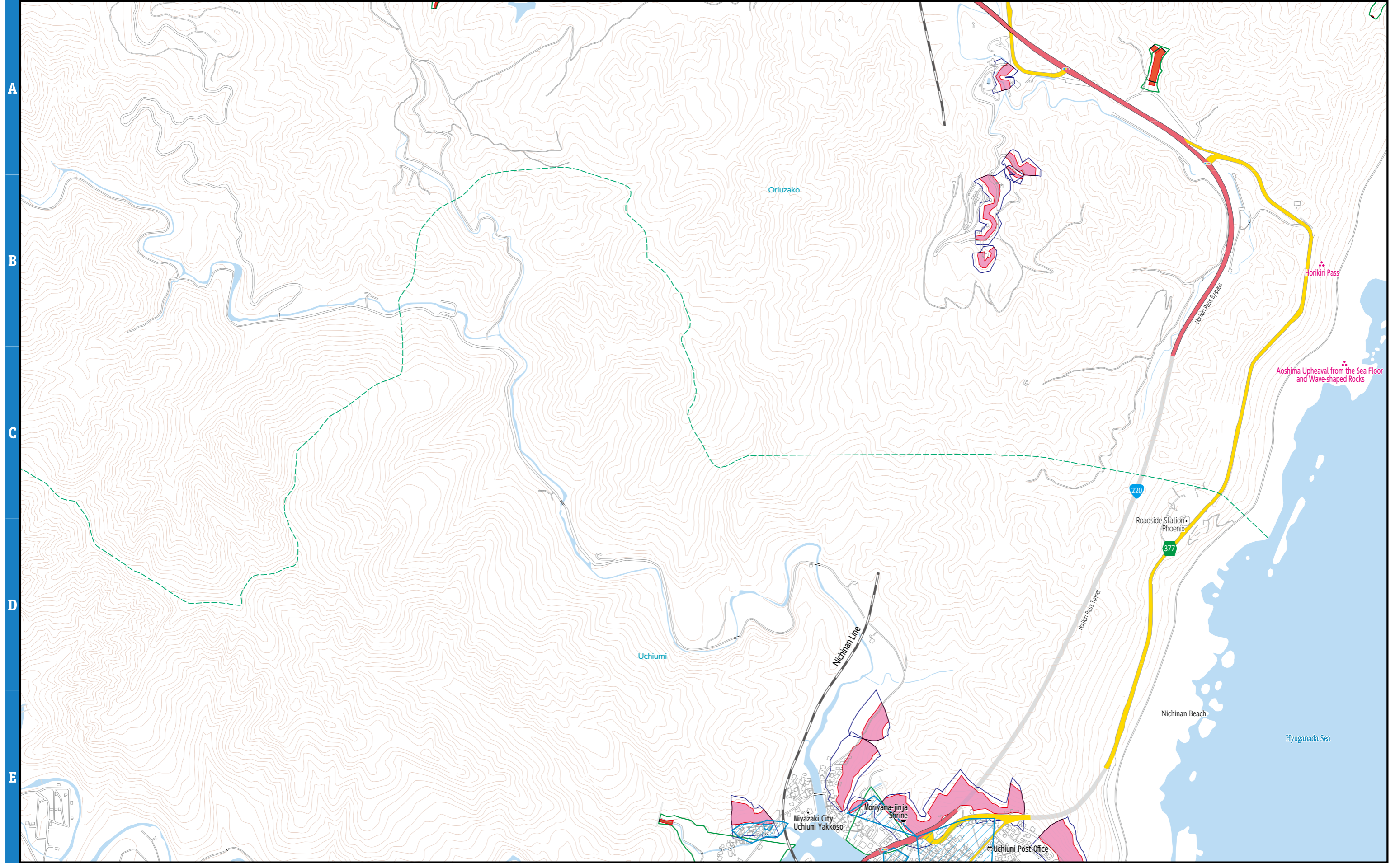
	Inundation Area such as collapsed houses (Flood Flow / Riverbank Erosion)
	Designated water level observatory
	Past Inundation Area (Typhoon, Heavy Rain, etc.)
	Underpass
	Disaster Risk Area

Legend		Debris Flow Hazard Area		Steep slope Hazard Area		Landslide Hazard Area
		Special Debris Flow Hazard Area		Special Steep slope Hazard Area		



13	14
	15
	16

0 100 200 250m  
Scale 1:10,000



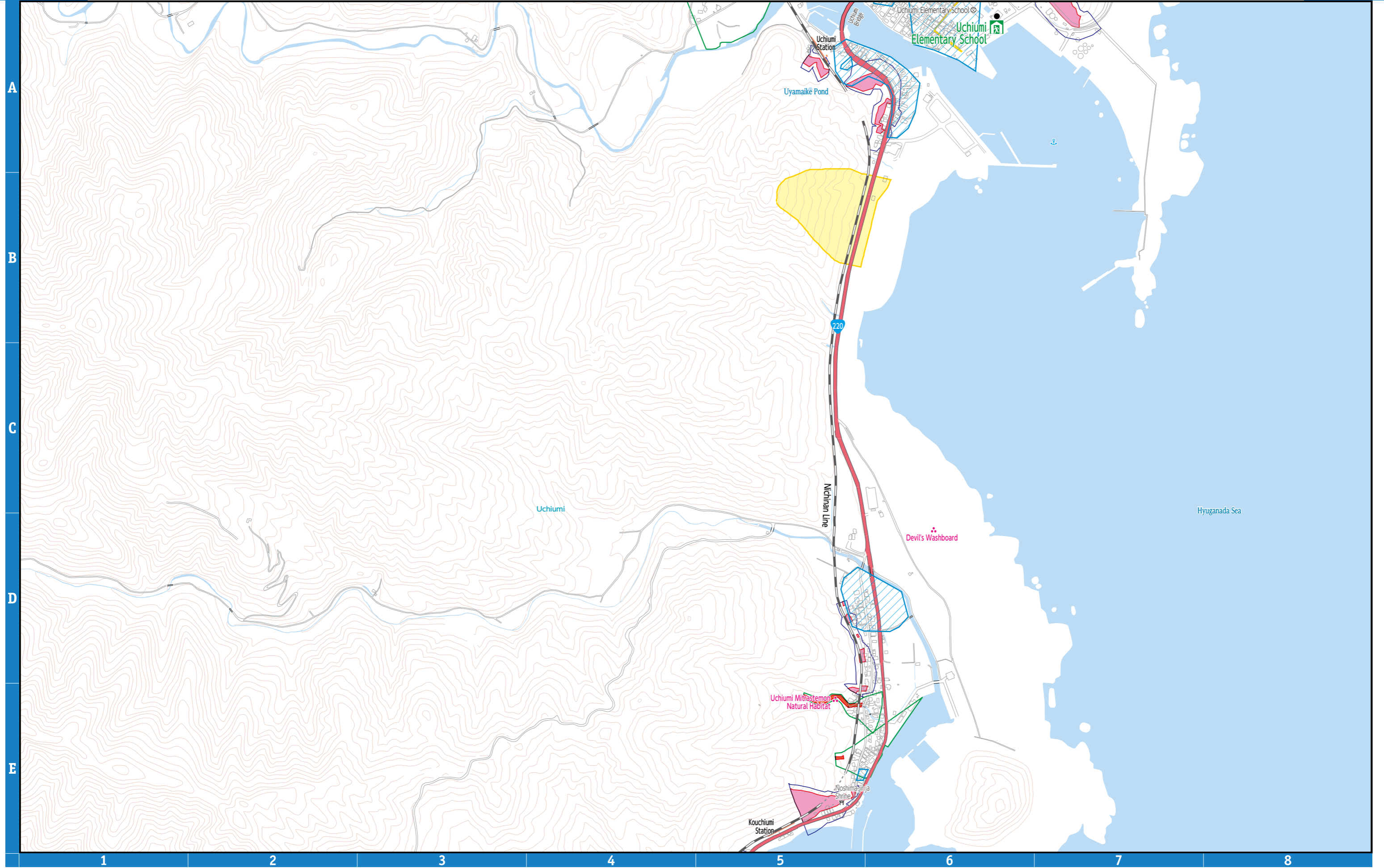
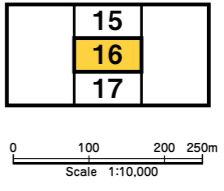


	Designated Shelter (Outside the flood inundation area)
	Designated Shelter (Within the flood inundation area)
	Main Facilities
	Emergency Designated Hospital
	Life Line

	More than 20.0m
	10.0 to less than 20.0m
	5.0 to less than 10.0m
	3.0 to less than 5.0m
	1.0 to less than 3.0m
	0.5 to less than 1.0m
	0.3 to less than 0.5m
	0.3m or less

	Inundation Area such as collapsed houses (Flood Flow / Riverbank Erosion)
	Designated water level observatory
	Past Inundation Area (Typhoon, Heavy Rain, etc.)
	Underpass
	Disaster Risk Area

	Debris Flow Hazard Area
	Special Debris Flow Hazard Area
	Steep slope Hazard Area
	Special Steep slope Hazard Area
	Landslide Hazard Area





<b>Legend</b>		Designated Shelter (Outside the flood inundation area)
		Designated Shelter (Within the flood inundation area)
		Main Facilities
		Emergency Designated Hospital
		Life Line

<b>River flood inundation depth</b>		More than 20.0m
		10.0 to less than 20.0m
		5.0 to less than 10.0m
		3.0 to less than 5.0m
		1.0 to less than 3.0m
		0.5 to less than 1.0m
	0.3 to less than 0.5m	
	0.3m or less	

	Inundation Area such as collapsed houses (Flood Flow / Riverbank Erosion)
	Designated water level observatory
	Past Inundation Area (Typhoon, Heavy Rain, etc.)
	Underpass
	Disaster Risk Area

<b>Legend</b>		Debris Flow Hazard Area		Steep slope Hazard Area		Landslide Hazard Area
		Special Debris Flow Hazard Area		Special Steep slope Hazard Area		

