

Designated Shelter (Outside the flood inundation area)

Designated Shelter (Within the flood inundation area)

Main Facilities

Emergency Designated Hospital

Life Line

More than 20.0m

10.0 to less than 20.0m

5.0 to less than 10.0m

3.0 to less than 5.0m

1.0 to less than 3.0m

0.5 to less than 1.0m

0.3 to less than 0.5m

0.3m or less

Inundation Area such as collapsed houses  
(Flood Flow / Riverbank Erosion)

Designated water level observatory

Past Inundation Area (Typhoon, Heavy Rain, etc.)

Underpass

Disaster Risk Area

Debris Flow  
Hazard Area

Special Debris Flow  
Hazard Area

Collapse of Steep slope  
Hazard Area

Special Steep slope  
Hazard Area

Landslide  
Hazard Area

N  
W E  
S

1

2

3

4

0100200250m

Scale 1:10,000

1

This map displays the flood inundation depth and disaster risk areas for Saito City and Miyazaki City. The map is overlaid with a grid with letters A through E on the left and numbers 1 through 8 at the bottom. Key features include:

- Legend:** Located at the top, defining symbols for designated shelters, main facilities, emergency hospitals, life lines, inundation areas, water level observatories, past inundation areas, underpasses, disaster risk areas, debris flow hazard areas, steep slope hazard areas, and landslide hazard areas.
- Map Area:** The map shows the confluence of the Sanzai River and Hitotsuse River. Saito City is located in the upper left, and Miyazaki City is in the lower left. Shintomi Town is in the center-right. Other locations include Okadomi, Yokkaichi, Nishigawara, Kurouno, Hanashita, Yanase, Gennojima, and Sadowaracho-Kamitajima.
- Infrastructure:** The Higashi-Kyushu Expressway (Route 18) and National Route 324 are shown. Bridges like the Yanasegawa Bridge and Nigakilawa Bridge are marked. A designated water level observatory is located at the bottom right.
- Flood Inundation:** Shaded areas represent different levels of flood inundation depth, ranging from 0.3m or less (lightest) to more than 20.0m (darkest).
- Disaster Risk:** Various hazard areas are outlined, including debris flow, steep slope, and landslide hazards.

18

19

Legend		Designated Shelter (Outside the flood inundation area)
		Designated Shelter (Within the flood inundation area)
		Main Facilities
		Emergency Designated Hospital
		Life Line

River flood inundation depth		More than 20.0m
		10.0 to less than 20.0m
		5.0 to less than 10.0m
		3.0 to less than 5.0m
		1.0 to less than 3.0m
		0.5 to less than 1.0m
		0.3 to less than 0.5m
		0.3m or less

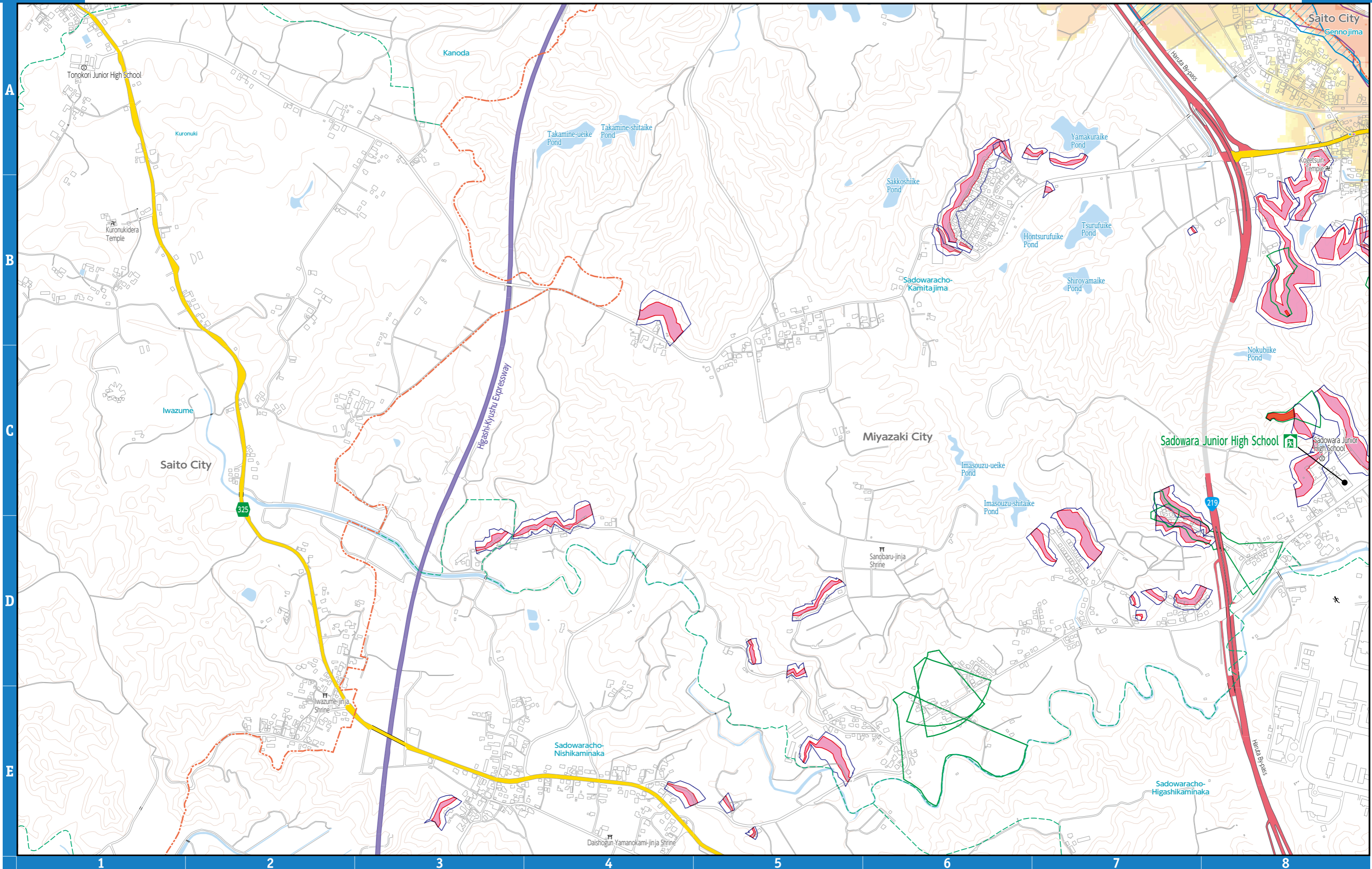
	Inundation Area such as collapsed houses (Flood Flow / Riverbank Erosion)
	Designated water level observatory
	Past Inundation Area (Typhoon, Heavy Rain, etc.)
	Underpass
	Disaster Risk Area

Legend	Debris Flow	Collapse of Steep slope	Landslide
	Debris Flow Hazard Area	Steep slope Hazard Area	Landslide Hazard Area
	Special Debris Flow Hazard Area	Special Steep slope Hazard Area	

1
2
3
5
6

0 100 200 250m

Scale 1:10,000



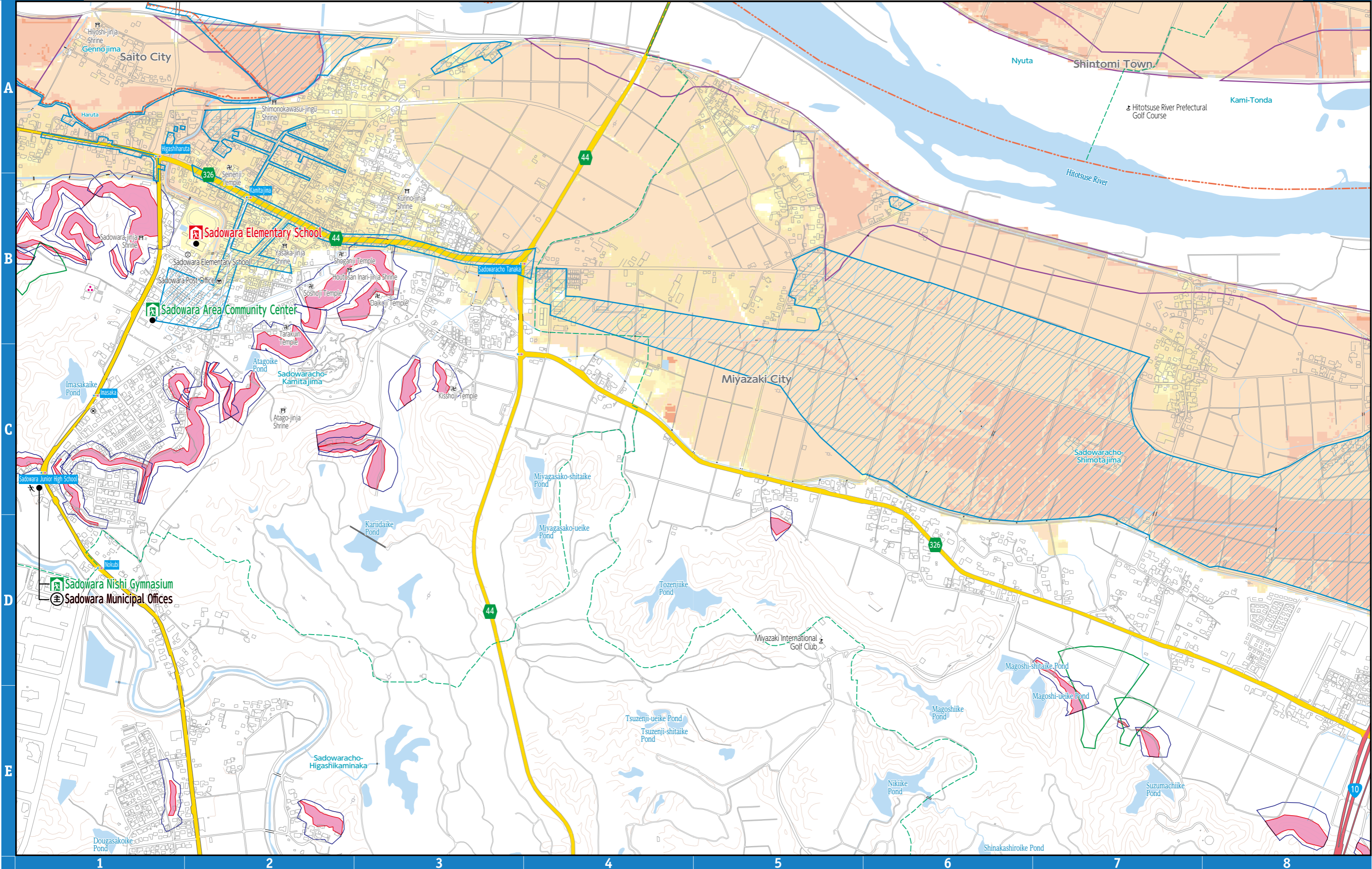
Legend		Designated Shelter (Outside the flood inundation area)
		Designated Shelter (Within the flood inundation area)
		Main Facilities
		Emergency Designated Hospital
		Life Line
River flood inundation depth		More than 20.0m
		10.0 to less than 20.0m
		5.0 to less than 10.0m
		3.0 to less than 5.0m
		1.0 to less than 3.0m
		0.5 to less than 1.0m
		0.3 to less than 0.5m
		0.3m or less
		Inundation Area such as collapsed houses (Flood Flow / Riverbank Erosion)
		Designated water level observatory
		Past Inundation Area (Typhoon, Heavy Rain, etc.)
		Underpass
		Disaster Risk Area

Legend	Debris Flow	Collapse of Steep slope	Landslide

1
2 3 4
5 6 7

0 100 200 250m

Scale 1:10,000



Legend		Designated Shelter (Outside the flood inundation area)
		Designated Shelter (Within the flood inundation area)
		Main Facilities
		Emergency Designated Hospital
	Life Line	

River flood inundation depth		More than 20.0m
		10.0 to less than 20.0m
		5.0 to less than 10.0m
		3.0 to less than 5.0m
		1.0 to less than 3.0m
		0.5 to less than 1.0m
		0.3 to less than 0.5m
		0.3m or less

	Inundation Area such as collapsed houses (Flood Flow / Riverbank Erosion)
	Designated water level observatory
	Past Inundation Area (Typhoon, Heavy Rain, etc.)
	Underpass
	Disaster Risk Area

Legend	Debris Flow	Collapse of Steep slope	Landslide
	Debris Flow Hazard Area	Steep slope Hazard Area	Landslide Hazard Area
	Special Debris Flow Hazard Area		Special Steep slope Hazard Area

1	3	4
6	7	

0 100 200 250m  
Scale 1:10,000

