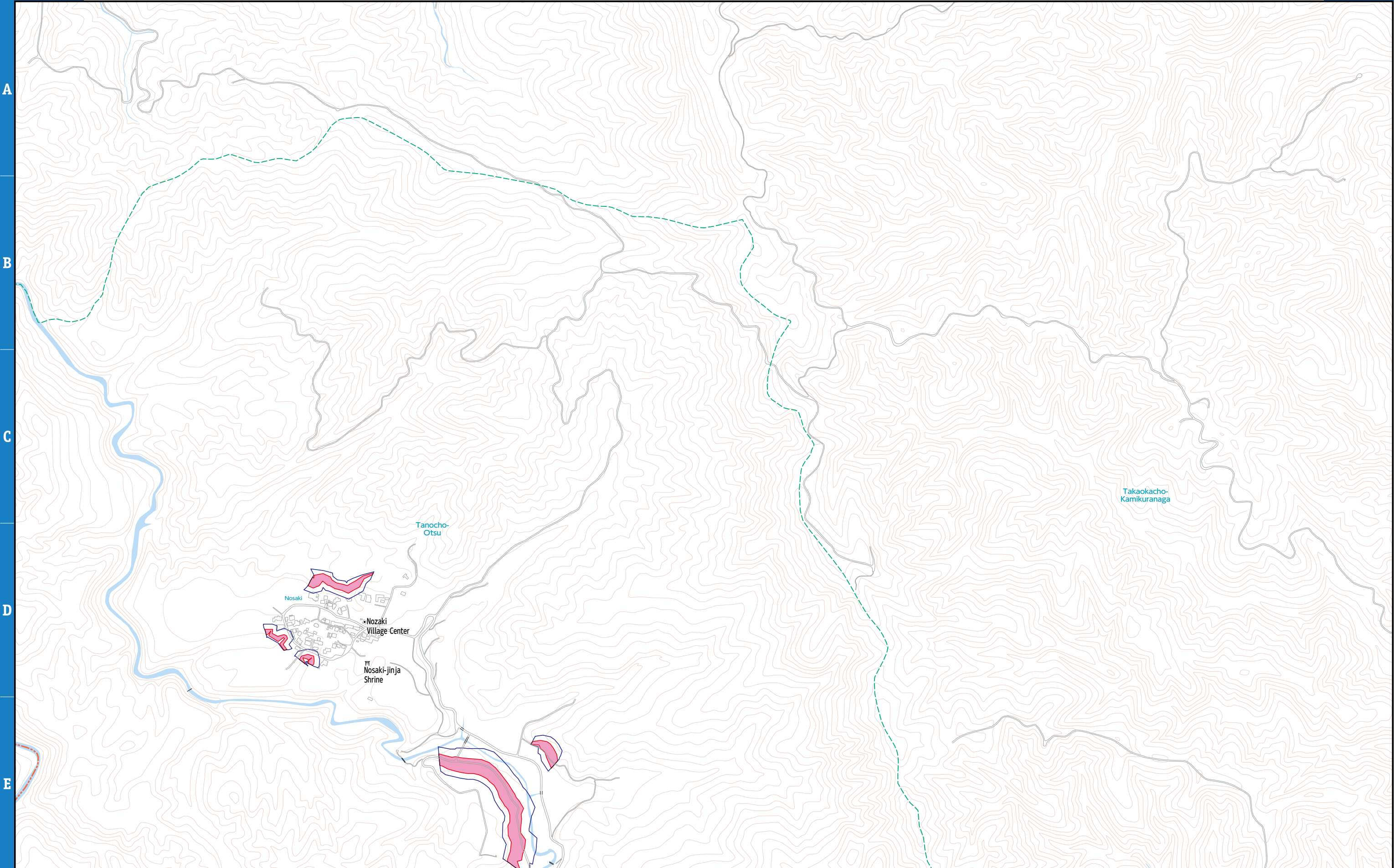


| | | | | | | | |
|--------|-----------|--|------------------------------|--|-------------------------|--|---|
| Legend | | Designated Shelter (Outside the flood inundation area) | River flood inundation depth | | More than 20.0m | | Inundation Area such as collapsed houses (Flood Flow / Riverbank Erosion) |
| | | Designated Shelter (Within the flood inundation area) | | | 10.0 to less than 20.0m | | Designated water level observatory |
| | | Main Facilities | | | 5.0 to less than 10.0m | | Past Inundation Area (Typhoon, Heavy Rain, etc.) |
| | | Emergency Designated Hospital | | | 3.0 to less than 5.0m | | Underpass |
| | Life Line | | | | 1.0 to less than 3.0m | | Disaster Risk Area |
| | | | | | 0.5 to less than 1.0m | | |
| | | | | | 0.3 to less than 0.5m | | |
| | | | | | 0.3m or less | | |

| | | | | | | |
|--------|-------------|---------------------------------|-------------------------|---------------------------------|-----------|-----------------------|
| Legend | Debris Flow | | Collapse of Steep slope | | Landslide | |
| | | Debris Flow Hazard Area | | Steep slope Hazard Area | | Landslide Hazard Area |
| | | Special Debris Flow Hazard Area | | Special Steep slope Hazard Area | | |

| | |
|---|---|
| 1 | 2 |
| 3 | 4 |

0 100 200 250m
Scale 1:10,000



| | | |
|--------|-----------|--|
| Legend | | Designated Shelter (Outside the flood inundation area) |
| | | Designated Shelter (Within the flood inundation area) |
| | | Main Facilities |
| | | Emergency Designated Hospital |
| | Life Line | |

| | | |
|------------------------------|--|-------------------------|
| River flood inundation depth | | More than 20.0m |
| | | 10.0 to less than 20.0m |
| | | 5.0 to less than 10.0m |
| | | 3.0 to less than 5.0m |
| | | 1.0 to less than 3.0m |
| | | 0.5 to less than 1.0m |
| | | 0.3 to less than 0.5m |
| | | 0.3m or less |

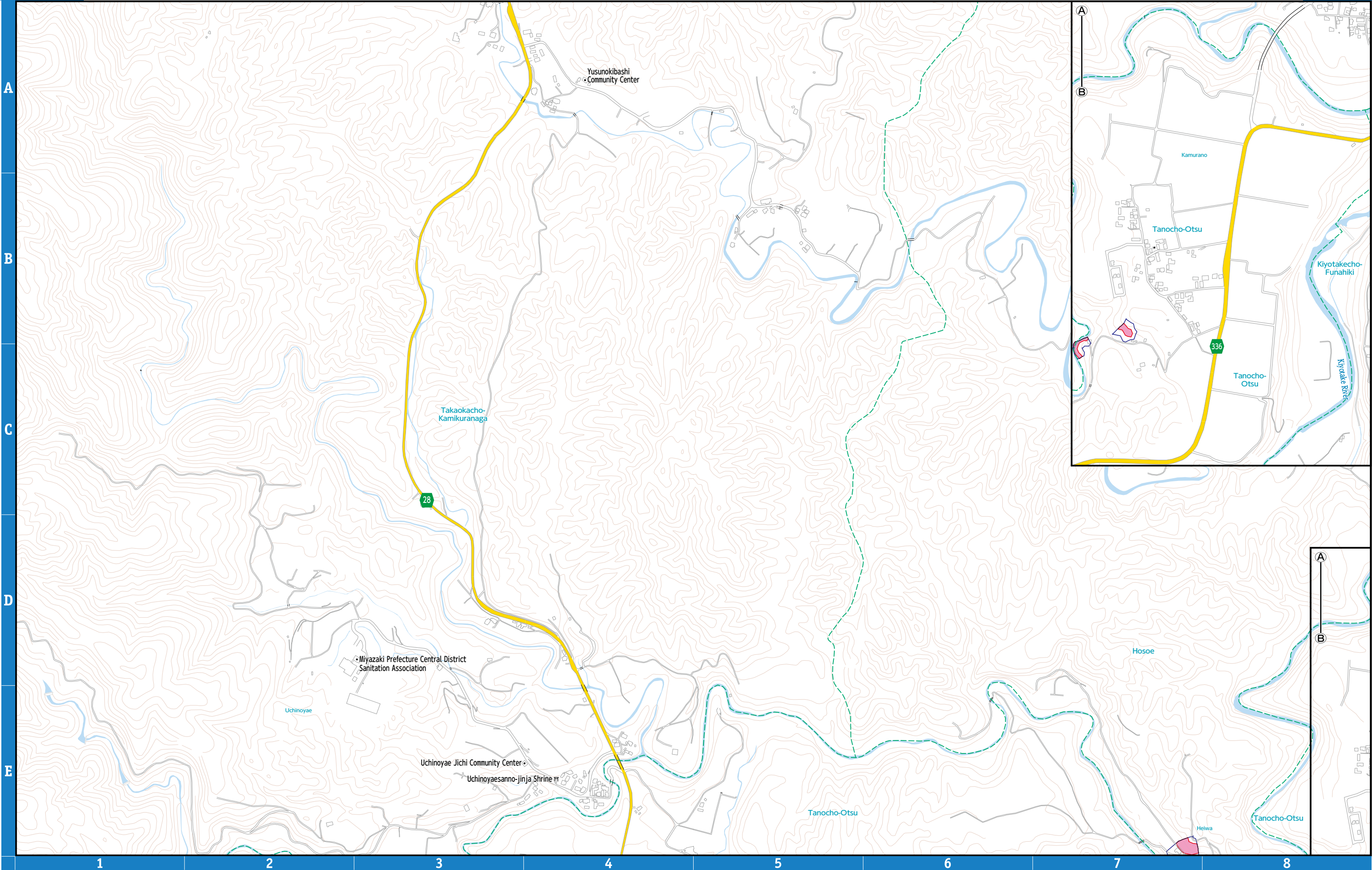
| | |
|--|---|
| | Inundation Area such as collapsed houses (Flood Flow / Riverbank Erosion) |
| | Designated water level observatory |
| | Past Inundation Area (Typhoon, Heavy Rain, etc.) |
| | Underpass |
| | Disaster Risk Area |

| | | | |
|--------|---------------------------------|---------------------------------|-----------------------|
| Legend | Debris Flow | Collapse of Steep slope | Landslide |
| | | | |
| | Debris Flow Hazard Area | Steep slope Hazard Area | Landslide Hazard Area |
| | | | |
| | Special Debris Flow Hazard Area | Special Steep slope Hazard Area | |






Scale 1:10,000

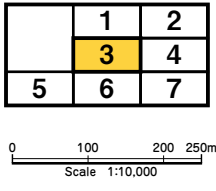

0 100 200 250m

| | |
|---|---|
| 1 | 2 |
| 3 | 4 |

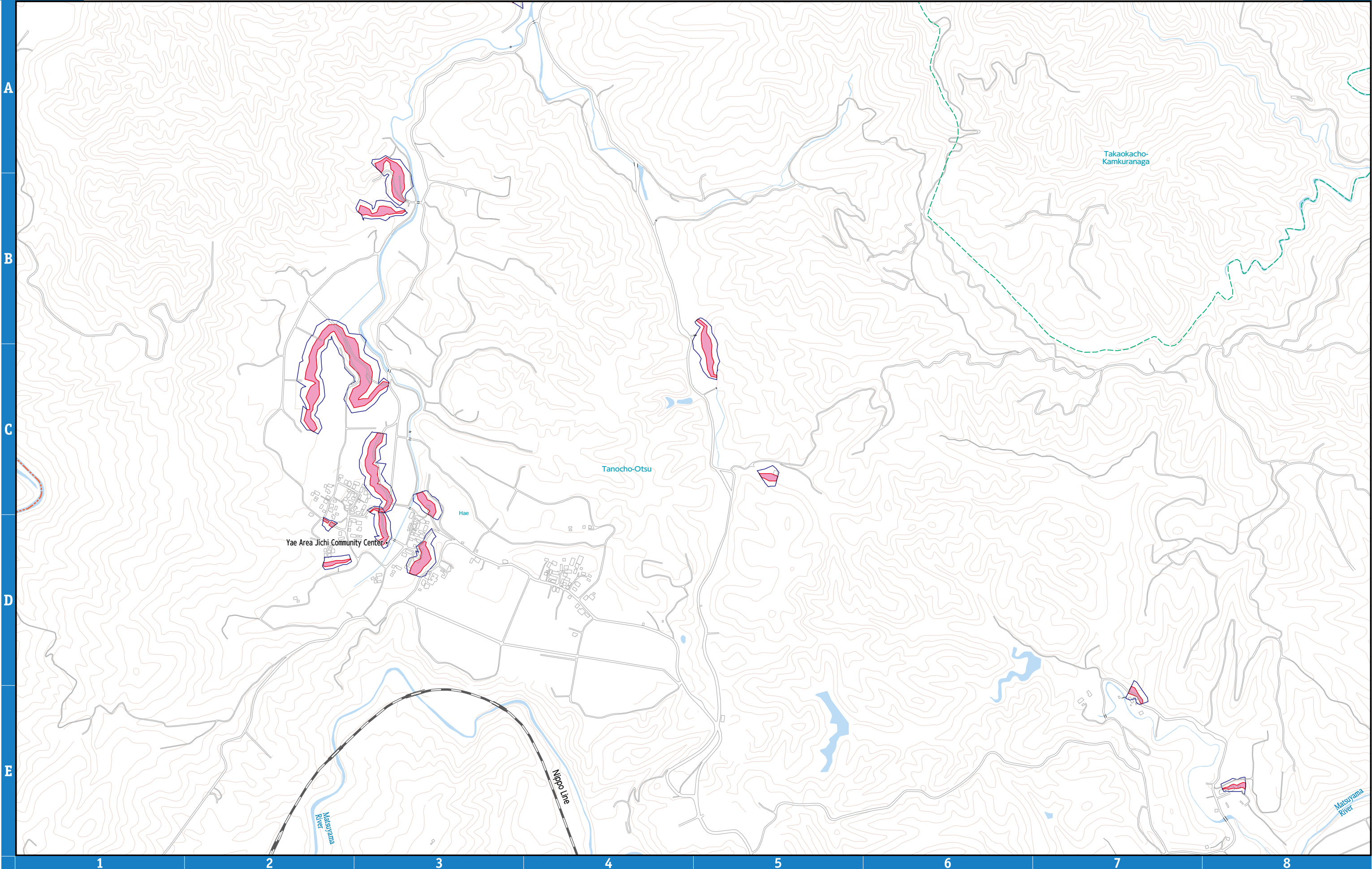







| | | | | | | | |
|--------|-----------|--|------------------------------|--|-------------------------|--|---|
| Legend | | Designated Shelter (Outside the flood inundation area) | River flood inundation depth | | More than 20.0m | | Inundation Area such as collapsed houses (Flood Flow / Riverbank Erosion) |
| | | Designated Shelter (Within the flood inundation area) | | | 10.0 to less than 20.0m | | Designated water level observatory |
| | | Main Facilities | | | 5.0 to less than 10.0m | | Past Inundation Area (Typhoon, Heavy Rain, etc.) |
| | | Emergency Designated Hospital | | | 3.0 to less than 5.0m | | Underpass |
| | Life Line | | | | 1.0 to less than 3.0m | | Disaster Risk Area |
| | | | | | 0.5 to less than 1.0m | | |
| | | | | | 0.3 to less than 0.5m | | |
| | | | | | 0.3m or less | | |

| Legend | Debris Flow | | Collapse of Steep slope | | Landslide | |
|--------|---|---------------------------------|---|---------------------------------|---|-----------------------|
| |  | Debris Flow Hazard Area |  | Steep slope Hazard Area |  | Landslide Hazard Area |
| |  | Special Debris Flow Hazard Area |  | Special Steep slope Hazard Area | | |



0 100 200 250m
Scale 1:10,000



| | | |
|--------|---|--|
| Legend |  | Designated Shelter (Outside the flood inundation area) |
| |  | Designated Shelter (Within the flood inundation area) |
| |  | Main Facilities |
| |  | Emergency Designated Hospital |
| |  | Life Line |

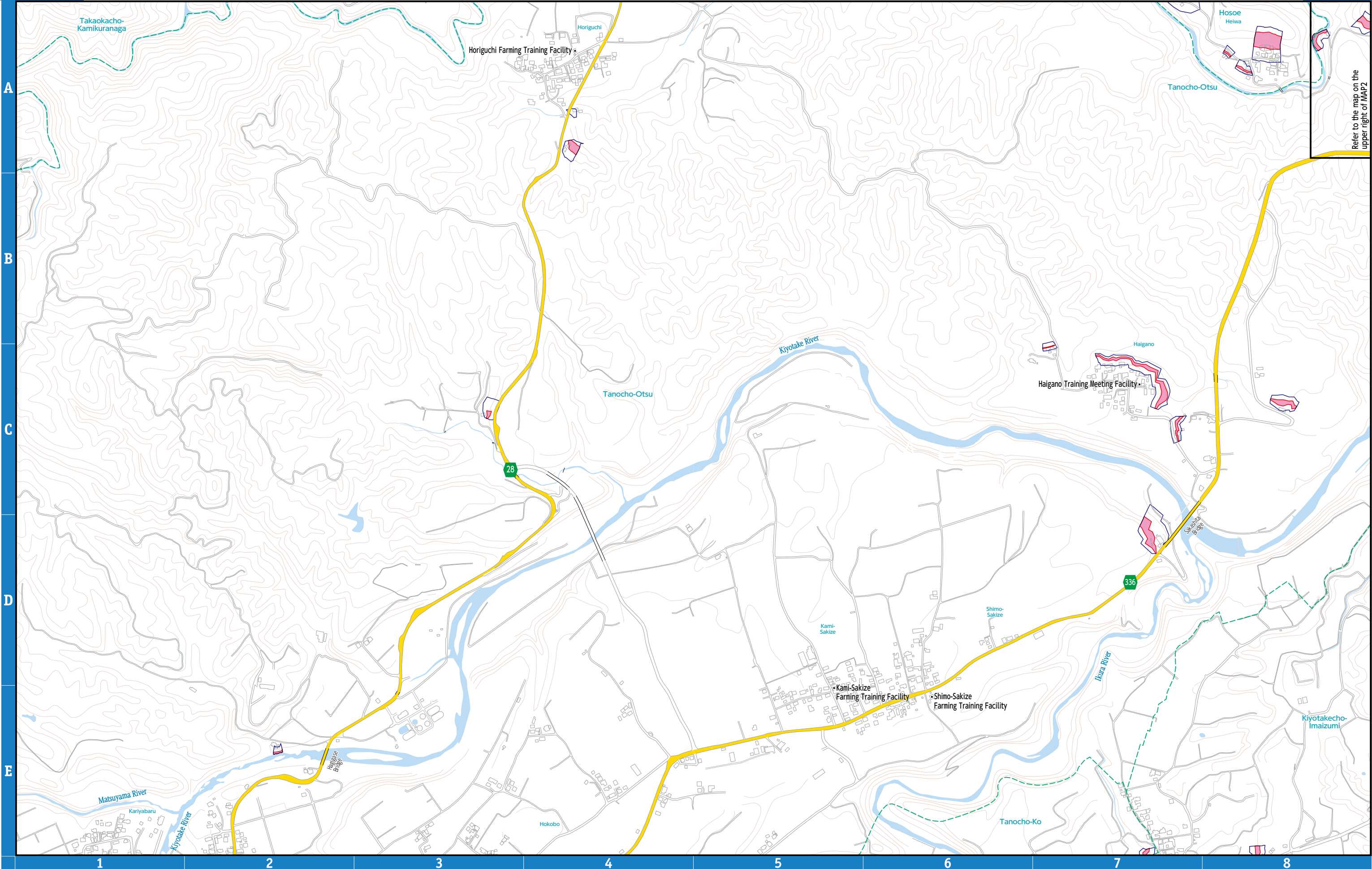
| | | |
|------------------------------|--|-------------------------|
| River flood inundation depth | | More than 20.0m |
| | | 10.0 to less than 20.0m |
| | | 5.0 to less than 10.0m |
| | | 3.0 to less than 5.0m |
| | | 1.0 to less than 3.0m |
| | | 0.5 to less than 1.0m |
| | | 0.3 to less than 0.5m |
| | | 0.3m or less |

| | |
|--|---|
| | Inundation Area such as collapsed houses (Flood Flow / Riverbank Erosion) |
| | Designated water level observatory |
| | Past Inundation Area (Typhoon, Heavy Rain, etc.) |
| | Underpass |
| | Disaster Risk Area |











| | | | |
|--------|---------------------------------|---------------------------------|-----------------------|
| Legend | Debris Flow | Collapse of Steep slope | Landslide |
| | | | |
| | Debris Flow Hazard Area | Steep slope Hazard Area | Landslide Hazard Area |
| | | | |
| | Special Debris Flow Hazard Area | Special Steep slope Hazard Area | |

0100200250m
Scale 1:10,000

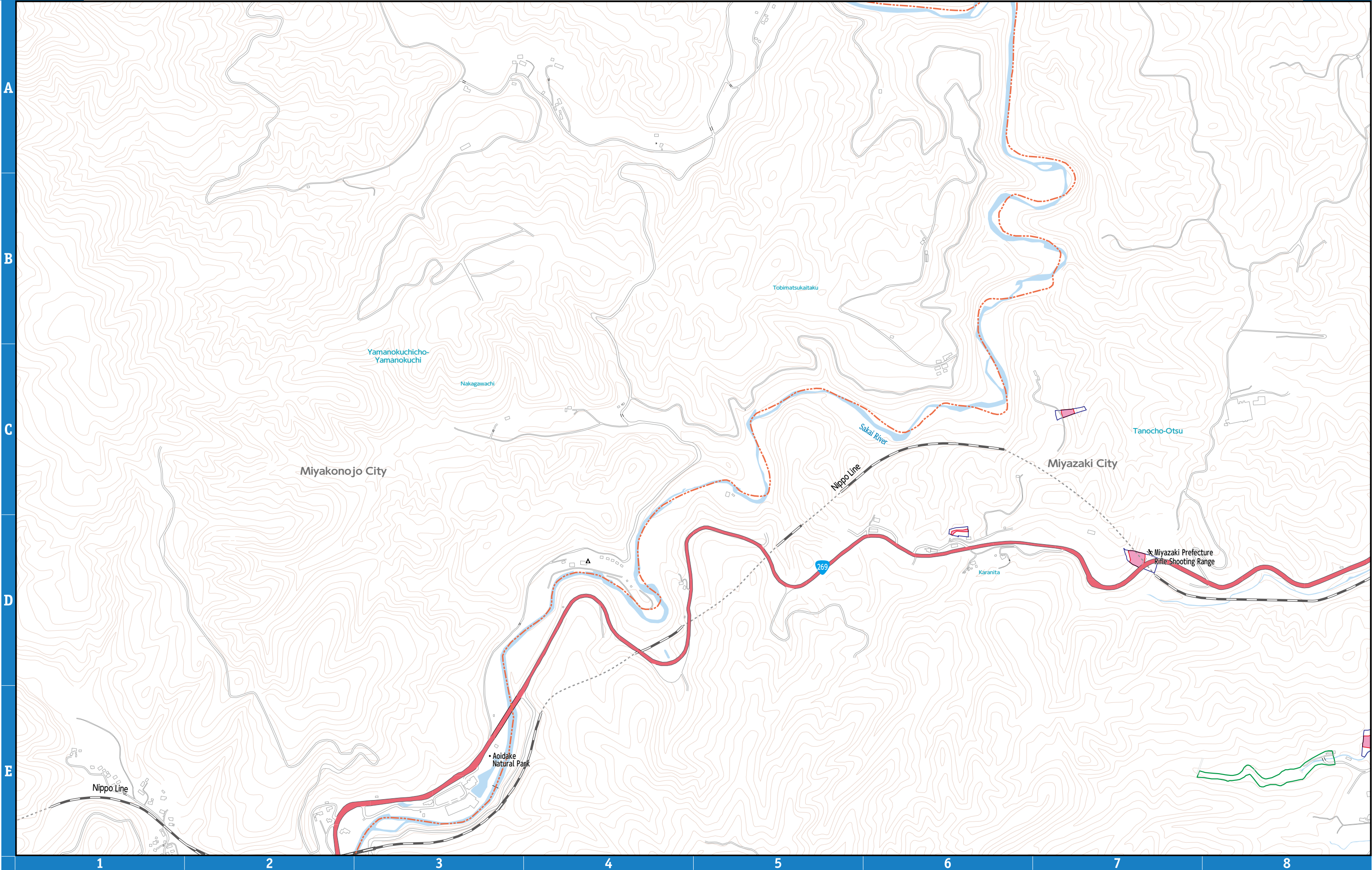
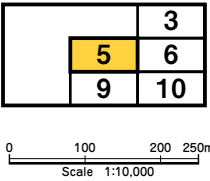
| | | |
|---|---|---|
| 1 | 2 | |
| 3 | 4 | |
| 6 | 7 | 8 |



Refer to the map on the upper right of MAP2

| | | | | | | | |
|--------|---|--|---|---|-------------------------|---|---|
| Legend |  | Designated Shelter (Outside the flood inundation area) | River flood inundation depth |  | More than 20.0m |  | Inundation Area such as collapsed houses (Flood Flow / Riverbank Erosion) |
| |  | Designated Shelter (Within the flood inundation area) | |  | 10.0 to less than 20.0m |  | Designated water level observatory |
| |  | Main Facilities | |  | 5.0 to less than 10.0m |  | Past Inundation Area (Typhoon, Heavy Rain, etc.) |
| |  | Emergency Designated Hospital | |  | 3.0 to less than 5.0m |  | Underpass |
| |  | Life Line | |  | 1.0 to less than 3.0m |  | Disaster Risk Area |
| |  | Life Line | |  | 0.5 to less than 1.0m | | |
| | | |  | 0.3 to less than 0.5m | | | |
| | | |  | 0.3m or less | | | |

| | | | |
|--------|-------------|-------------------------|-----------|
| Legend | Debris Flow | Collapse of Steep slope | Landslide |
| | | | |
| | | | |
| | | | |

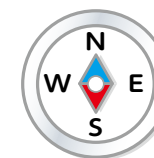


| | |
|--|--|
| | Designated Shelter (Outside the flood inundation area) |
| | Designated Shelter (Within the flood inundation area) |
| | Main Facilities |
| | Emergency Designated Hospital |
| | Life Line |

| | | |
|---------------------------------|--|-------------------------|
| River flood inundation depth | | More than 20.0m |
| | | 10.0 to less than 20.0m |
| | | 5.0 to less than 10.0m |
| | | 3.0 to less than 5.0m |
| | | 1.0 to less than 3.0m |
| | | 0.5 to less than 1.0m |
| | | 0.3 to less than 0.5m |
| | | 0.3m or less |

| | |
|--|---|
| | Inundation Area such as collapsed houses (Flood Flow / Riverbank Erosion) |
| | Designated water level observatory |
| | Past Inundation Area (Typhoon, Heavy Rain, etc.) |
| | Underpass |
| | Disaster Risk Area |

| Debris Flow | Collapse of Steep slope | Landslide |
|-------------|-------------------------|-----------|
| | | |
| | | |



| | | |
|---|----|----|
| | 3 | 4 |
| 5 | 6 | 7 |
| 9 | 10 | 11 |

0 100 200 250m
Scale 1:10,000

